

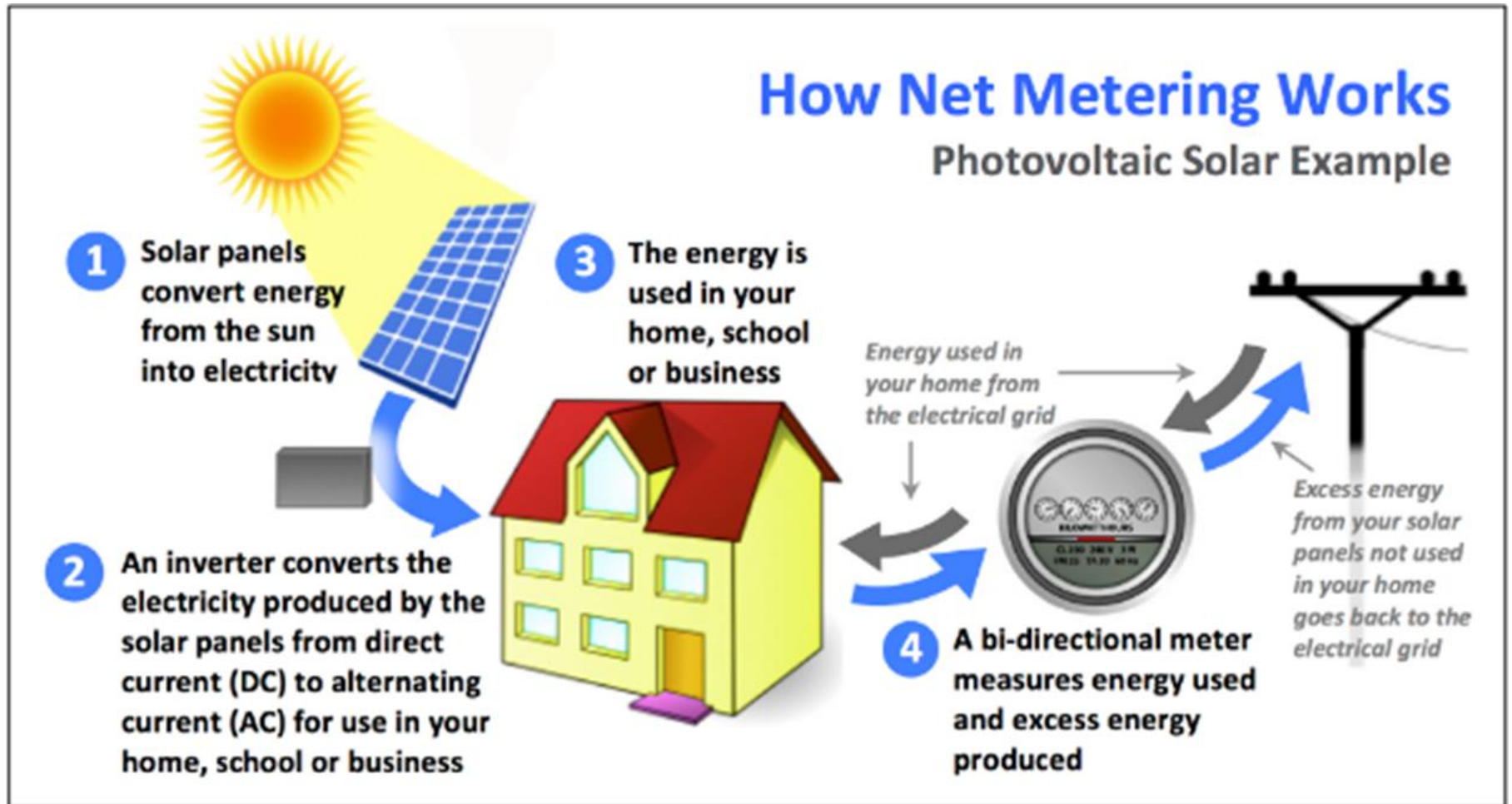
Massachusetts First Bill Walkthrough for Residential & Small Commercial Customers

April 2024

nationalgrid



“Behind-the-Meter” Net Metering



Basics of Net Metering

Net metering allows you to generate your own electricity to offset your electricity usage during a billing period.

- When you use more power than you generated, you imported power from your electric company.



- When you generated more power than you used, you exported power to your electric company.

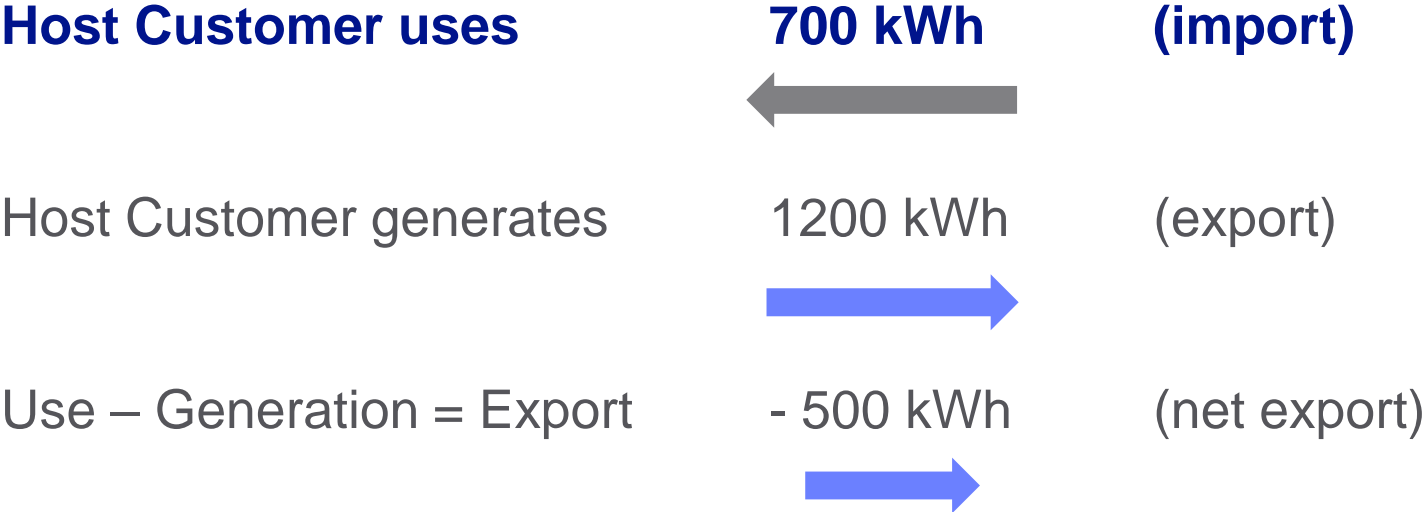


- In any billing period where exported energy exceeds imported, your electric bill will show negative use. You are a “net exporter” for the billing period and are entitled to a Net Metering Credit.

Important: Standard utility meters cannot differentiate between import and export. A bi-directional or net meter is needed to properly record directional flow.

Simple Example of Net Metering

Our Host Customer uses 700 kWh per billing period and has a 12kW PV system, which is expected to generate ~ 1200 kWh during the same period.



The electric bill will show only the net value of -500 kWh

The net metering credit will be calculated based on 500 kWh

Net Metering 60 kW or less (Class I Facilities)

Projects 10 kW or less on a single-phase circuit, or 25 kW or less on a three-phase circuit are “cap exempt”. These facilities will receive standard net metering credits for net excess generation at their site.

- **The standard net metering credit is the sum of the following: distribution, transmission, transition, and fixed basic service. Those rates can be found here [National Grid Rates](#)**

Class I projects greater than the cap exempt sizes must apply for a cap allocation with System of Assurance at [MassACA](#) to participate in the Net Metering program.

Non cap exempt Class I projects that apply for and receive a cap allocation from MassACA after the following dates will receive Market Net Metering Credits, which is valued at 60% of their net excess generation.

- **Cap allocation application submitted after 9/26/2016**
- **Cap allocation received after 1/8/2017**

Projects greater than these exempt sizes that do not apply for/receive a cap allocation will be designated as Qualifying Facilities (QF). QFs with net excess generation will have credits calculated at the monthly average price as determined by ISO NE. (Independent System Operator www.iso-ne.com).

Simple Example of Standard Net Metering Bill

DETAIL OF CURRENT CHARGES					
Delivery Services					
Service Period	No. of days	Current Reading	-	Previous Reading	= Total Usage
Jun 9 - Jul 10	31	93431 <i>Actual</i>		93708 <i>Actual</i>	-277 kWh
METER NUMBER	[REDACTED]	NEXT SCHEDULED READ DATE ON OR ABOUT Aug 10			
RATE	Residential Regular R-1				
	Customer Charge				7.00
	Net Met Cr	0.25959	x	-277 kWh	-71.91
	Total Delivery Services				-\$ 64.91

This residential account exported 277 kWh to the grid. This account receives Standard Net Metering Credits for their net excess generation. (this rate varies from month to month.)

The Standard Net Metering Credit is the sum of the following charges: distribution, transmission, transition, and fixed basic service.

You will always pay a customer charge regardless of whether you export or not, and this charge will decrease your credit balance.

Simple Example of Market Net Metering Bill

DETAIL OF CURRENT CHARGES					
Delivery Services					
Service Period	No. of days	Current Reading	-	Previous Reading	= Total Usage
May 1 - May 30	29	28007 <i>Actual</i>		28391 <i>Actual</i>	-384 kWh
METER NUMBER	NEXT SCHEDULED READ DATE ON OR ABOUT Jun 30				
RATE	Residential Regular R-1				
	Customer Charge				7.00
	Net Met Cr	0.25959 x		-230 kWh	-59.69
	Total Delivery Services				-\$ 52.69

This residential account exported 384 kWh to the grid. This account receives Market Net Metering Credits, which are calculated as 60% (230 kWh) of their net excess generation (this rate varies from month to month.) *

The Market Net Metering Credit is the sum of the following: distribution, transmission, transition, and fixed basic service.

You will always pay a customer charge regardless of whether you export or not, and this charge will decrease your credit balance.

*Agricultural and Neighborhood Facilities are treated differently

Simple Example of Qualifying Facility Bill

DETAIL OF CURRENT CHARGES					
Delivery Services					
Service Period	No. of days	Current Reading	-	Previous Reading	= Total Usage
Aug 30 - Sep 28	29	99368 <i>Actual</i>		99473 <i>Actual</i>	-105 kWh
METER NUMBER	NEXT SCHEDULED READ DATE ON OR ABOUT				Nov 1
RATE	Residential Regular R-1				
	Customer Charge				7.00
	ISO Clearing Price	0.03247241	x	-105 kWh	-3.41
	Total Delivery Services				\$ 3.59

This residential Qualifying Facility account exported 105 kWh to the grid. The credits for the net excess generation are calculated at the average of the previous month's short run energy rate, as determined by ISO NE. (this rate varies from month to month.)

You will always pay a customer charge regardless of whether you export or not, and this charge will decrease your credit balance.

*There may be a delay in your billing if you export energy while the Company waits for ISO pricing data.

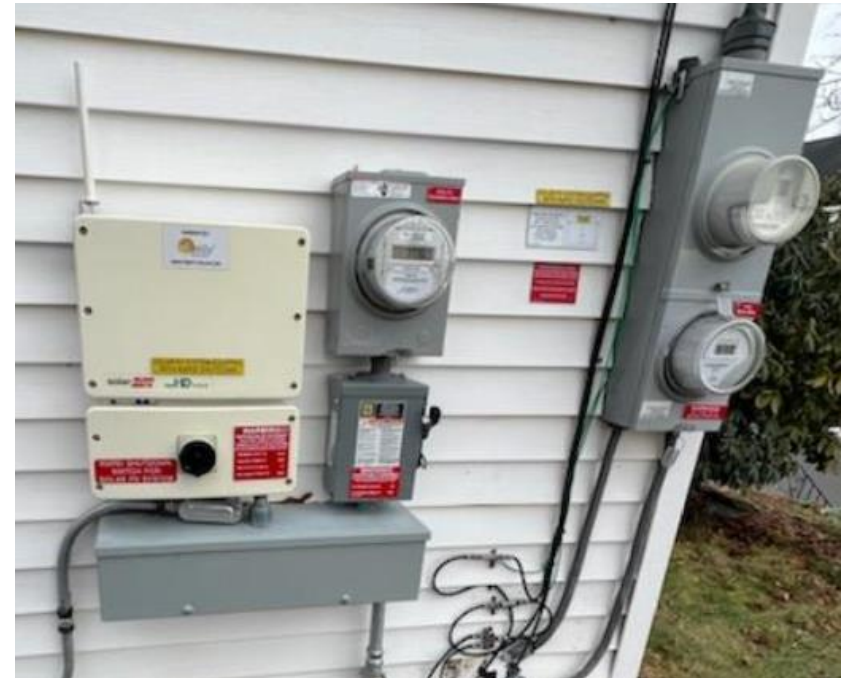


nationalgrid

MA SMART- Solar Massachusetts Renewable Target Program

The SMART Program is a long-term sustainable solar incentive program sponsored by Eversource, National Grid and Unitil, and overseen by the DOER and DPU.

- Projects (25 kW or less) will receive incentive compensation for 10 years.
- There are 2 meters installed for small projects in the SMART program- a net meter, and a generation meter.
- The Generation Meter is used to determine the SMART incentive payment and should only record your total generation. The Generation Meter should always spin backwards and record negative values.
- The Net Meter is used for your monthly bill and spins in 2 directions: backwards when you are exporting power, and forwards when you are using power from the grid.
- **Participation in MA SMART runs parallel with other incentive programs.**



*You may have an additional meter or additional equipment recording your generation. These are likely to be customer-owned equipment, not National Grid equipment. These are likely to be installed by the solar developer.

MA SMART Incentive Payment

- The MA SMART incentive is a monthly payment for the total generation from your solar panels.
- This payment is paid as a paper check or direct deposit.
- The payment will be issued to the Payee is determined by the System Owner. The System Owner is responsible for submitting the Payee information during the SMART application process.
 - If you are leasing your solar panels, it is likely that the SMART Incentive Payment displayed on your bill will be paid to your solar company. Please refer to your contract with the solar company for this information.
- Payment is based on the incentive rate multiplied by the total generation, as recorded on the Generation Meter.
 - The SMART Incentive Payment is calculated as your Total Compensation Rate, minus your Value of Energy.
 - Total Compensation Rate – The maximum compensation for each kWh generated by the project (determined by CLEAResult, at time of approval).
 - Value of Energy – The value that you are receiving from reducing your electricity consumption.

MA SMART Incentive Payment

- The Value of Energy is a calculation based on the Distribution Charge, Transition Charge, Transmission Charge and 3-year average National Grid Basic Service Supply Rate at the time of approval for SMART.
- Why is my Total Compensation Rate reduced by the Value of Energy (VOE) to determine a SMART incentive payment?
 - The VOE represents the value that you receive from offsetting power at your premise, thereby reducing your electric bill.
 - The Total Compensation Rate is the maximum value that you are entitled to receive from the kWh generated by the solar panels.
 - You are receiving your Total Compensation Rate (i.e., SMART compensation) through both reduced electricity and SMART incentive payments.

Annually, the System Owner receives a 1099 tax form if the incentive payments exceed \$600 for the calendar year. (It is not the Payee who is taxed).

Example of MA SMART/Net Metering Bill

This customer participates in MA SMART as a net metered customer. They generate net metering credits based on the net excess generation and are paid MA SMART incentive payments* based on total generation.

You will always pay a customer charge regardless of whether you export or not, and this charge will decrease your credit balance.

DETAIL OF CURRENT CHARGES

Delivery Services

Service Period	No. of days	Current Reading	-	Previous Reading	=	Total Usage
Jul 19 - Aug 18	30	91302 Actual		92008 Actual		-706 kWh
METER NUMBER [REDACTED]		NEXT SCHEDULED READ DATE ON OR ABOUT [REDACTED]				
RATE Residential Regular R-1						
Customer Charge						7.00
Net Met Cr						0.22827 x -706 kWh = -161.18
Distributed Solar Charge						0.00396 x 876 kWh = 3.47
Total Delivery Services						-\$ 150.71

MA SMART Incentive Program

Type of Service	Current Reading	-	Previous Reading	=	Difference	x	Meter Multiplier	=	Total Usage
Energy	63851 Actual		65433 Actual		-1582		1		-1582 kWh
Total Energy									0 kWh
METER NUMBER [REDACTED]		NEXT SCHEDULED READ DATE ON OR ABOUT [REDACTED]							
SERVICE PERIOD Jul 19 - Aug 18		NUMBER OF DAYS IN PERIOD		30					

SMART Compensation

Provided here as information only. This payment will be issued separately to the Solar Facility Owner or designated payee as identified on the Payment Credit Form submitted with SMART project's application. For more information, please call: 1-800-322-3223.

Total Compensation Rate	0.31126 x 1582 kWh	492.41
Value of Energy	0.19942 x -1582 kWh	-315.48
Calculated SMART Incentive		\$ 176.93

*these payments may or may not go to the customer.

Example of MA SMART/Market Net Metering Bill

This customer participates in MA SMART and receives Market Net Meter Credits based on 60% of the net excess generation and are paid MA SMART incentive payments* based on total generation.

You will always pay a customer charge regardless of whether you export or not, and this charge will decrease your credit balance.

DETAIL OF CURRENT CHARGES

Delivery Services

Service Period	No. of days	Current Reading	-	Previous Reading	=	Total Usage
Jul 19 - Aug 23	35	95212 Estimate		95703 Actual		-491 kWh
METER NUMBER [REDACTED]		NEXT SCHEDULED READ DATE ON OR ABOUT Oct 20				
RATE Residential Regular R-1						
Customer Charge						7.00
Net Met Cr						0.25959 x -295 kWh = -76.56
Distributed Solar Charge						0.0102 x 1906 kWh = 19.44
Total Delivery Services						-\$ 50.12

MA SMART Incentive Program

Type of Service	Current Reading	-	Previous Reading	=	Difference	x	Meter Multiplier	=	Total Usage	
Energy	89005 Estimate		91206 Actual		-2201		1		-2201 kWh	
Total Energy									0 kWh	
METER NUMBER [REDACTED]		NEXT SCHEDULED READ DATE ON OR ABOUT Oct 20								
SERVICE PERIOD Jul 19 - Aug 23		NUMBER OF DAYS IN PERIOD 35								

SMART Compensation

Provided here as information only. This payment will be issued separately to the Solar Facility Owner or designated payee as identified on the Payment Credit Form submitted with SMART project's application. For more information, please call: 1-800-322-3223.

Total Compensation Rate	0.25704	x	2201 kWh	=	565.75
Value of Energy	0.23274	x	-2201 kWh	=	-512.26
Calculated SMART Incentive					\$ 53.49

*these payments may or may not go to the customer.

Example of MA SMART/Qualifying Facility Bill

This customer participates in MA SMART and receives qualifying facility credits based on the net excess generation. They are paid MA SMART incentive payments* based on total generation.

You will always pay a customer charge regardless of whether you export or not, and this charge will decrease your credit balance.

DETAIL OF CURRENT CHARGES				
Delivery Services				
Service Period	No. of days	Current Reading	- Previous Reading	= Total Usage
Apr 14 - May 15	31	86423 <i>Actual</i>	87482 <i>Actual</i>	-1059 kWh
METER NUMBER [REDACTED]		NEXT SCHEDULED READ DATE ON OR ABOUT Jun 15		
RATE Residential Regular R-1				
Customer Charge				7.00
Distributed Solar Charge		0.0042 x 383 kWh	1.61	
ISO Clearing Price		0.02526773 x -1059 kWh	-26.76	
Total Delivery Services				-\$ 18.15

MA SMART Incentive Program

Type of Service	Current Reading	-	Previous Reading	=	Difference	x	Meter Multiplier	=	Total Usage
Energy	59619 <i>Actual</i>		61061 <i>Actual</i>		-1442		1		-1442 kWh
Total Energy									0 kWh
METER NUMBER [REDACTED]		NEXT SCHEDULED READ DATE ON OR ABOUT Jun 15							
SERVICE PERIOD Apr 14 - May 15		NUMBER OF DAYS IN PERIOD 31							

SMART Compensation

Provided here as information only. This payment will be issued separately to the Solar Facility Owner or designated payee as identified on the Payment Credit Form submitted with SMART project's application. For more information, please call: 1-800-322-3223.

Total Compensation Rate	0.29881 x 1442 kWh	430.88
Value of Energy	0.19942 x -1442 kWh	-287.56
Calculated SMART Incentive		\$ 143.32

*these payments may or may not go to the customer.

01

Transfer of Credits

nationalgrid



Terminology

Schedule Z- the mechanism used to request net metering credit transfers from the host account to satellite accounts.

Host account- the account “hosting” the generator where the credits are generated.

Satellite account- an account that receives credits from the host account (may or may not have their own on-site generation.)

Important to note:

- There is no mechanism for transferring specific dollar amounts, only percentages of Net Metering credits generated during a billing period.
- Credits transferred are based on the current month’s generation. Accumulated credits are not included in the transfer.
- One-time transfers of credits on active accounts are generally not allowed. Any unallocated credits will remain on the host account.

*Qualifying Facilities are not eligible for credit transfers; credits will remain on the host account.



Transferring Credits via Schedule Z

- A Schedule Z is used to allocate Net Metering Credits from a Host Account to “satellite” account(s)
- Net Metering Credits are calculated using certain components of the retail rate of the Host Account
- The value of the Net Metering Credit depends on the rate of the Host and the class type and vintage of the Net Metering Facility
- National Grid transfers credits, on a percentage basis, to accounts listed on your Schedule Z.
- A schedule Z can be updated up to 6 times per year, but only once per calendar month.
- It can take 1-2 billing cycles for a Schedule Z to be updated in our system.
- If a satellite account becomes final/closes, the % allocation will remain on the host account.

Filling out a Schedule Z

- Please be sure to fill out completely, sign, and date.
- If you are allocating credits to more than 5 satellite customers, you must submit the signed PDF along with the excel spreadsheet formatted as found here: <https://gridforce.my.site.com/s/article/Schedule-Z>

Massachusetts Electric Company & Nantucket Electric Company (d/b/a National Grid)

M.D.P.U. 1468

Schedule Z – Additional Information Required for Net Metering Service

Please fill out the form completely (and initial the bottom of each page).

Host Customer Name: _____ Telephone: _____

Address of Facility: _____

Billing Account Number: _____

Meter Number: _____ Application ID Number: _____

The Host Customer is a (check any that apply): Municipality Other Governmental Entity

If so, submit certification provided by the DPU when obtained. Public Classification ID: _____

A) Is the Host Customer applying for net metering service an electric company, generation company, aggregator, supplier, energy marketer, or energy broker, as those terms are used in M.G.L. c. 164, §§ 1 and 1F and 220 C.M.R. §11.00? No Yes (you are not eligible for net metering service)

Transfer of Ownership

If you move into a location with solar, you will need to first get the utility bill in your name by calling Customer Service at **1-800-322-3223**

The documents required vary based on the type of system and the ownership role that is changing. Please review information needed here:

<https://gridforce.my.site.com/s/article/Massachusetts-Transfer-Of-Ownership>

These forms can be submitted on our portal here:

<https://gridforce.my.site.com/s/contact-us>

APPLICATIONS HELP

Massachusetts

For additional guidance on navigation, registration and more, please visit our Help Page or Contact Us

As a reminder, please make sure you clean out your cache to ensure the most recent updates are being viewed in the portal.

Quick Links

New York Home

Contact Us

PROCESS

DOCUMENTS

Contact Us/Helpful Links

Questions? Contact us here: gridforce.my.site.com/s/contact-us

Solar Hub (bill examples & program information): <https://www.nationalgridus.com/solar-hub/>

Information on Net Metering: gridforce.my.site.com/s/article/MA-BUSINESS-Net-Metering

Information on Cap Allocation: www.massaca.org

Information on MA SMART: gridforce.my.site.com/s/article/SMART-Solar-Massachusetts-Renewable-Target-Program

Schedule Z Documents

How to Complete a Schedule Z

Transfer of Ownership information:

gridforce.my.site.com/s/article/Massachusetts-Transfer-Of-Ownership

Customer Service: 1-800-322-3223

Report Outages: 1-800-465-1212 or www.nationalgridus.com/MA-home/outage-central/

national**grid**