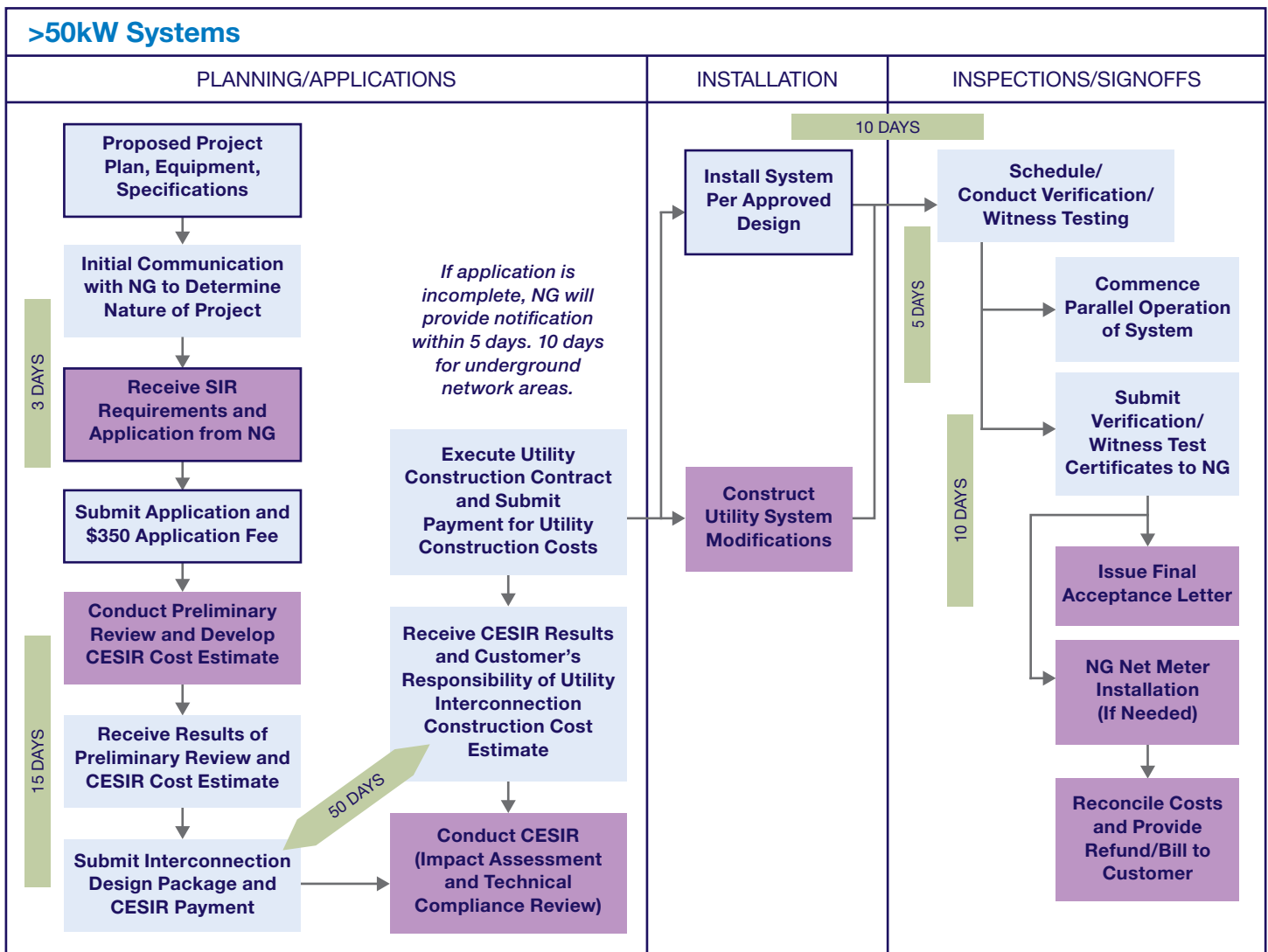


# Interconnection Process > 50kW

For generator sizes greater than 50 kW, this page provides an overview of the process, your responsibilities, and the associated timelines.

Please note that all timelines are denoted in business days. More details are located in the full New York Standardized Interconnection Requirements and can be found on [New York State Public Service Commission website](#).



**Customer Responsibility**

**National Grid Responsibility**